

a project by:



aarayan[®]
અમલા શસ્ત્રતા

Site Address:

The Keshavbaug Capital
Nr. ITC Narmada, Opp. Ashopalav, 132 Ft. Ring Road, Vastrapur,
Ahmedabad City, Ahmedabad, Gujarat

Call: 79921 11111

PR/GJ/AHMEDABAD/AHMEDABAD CITY/AUDA/CAA12046/280623
Website: gujrerar1.gujarat.gov.in:



THE
KESHAVBAUG
C A P I T A L

GOLD-CLASS OFFICES
& SHOWROOM

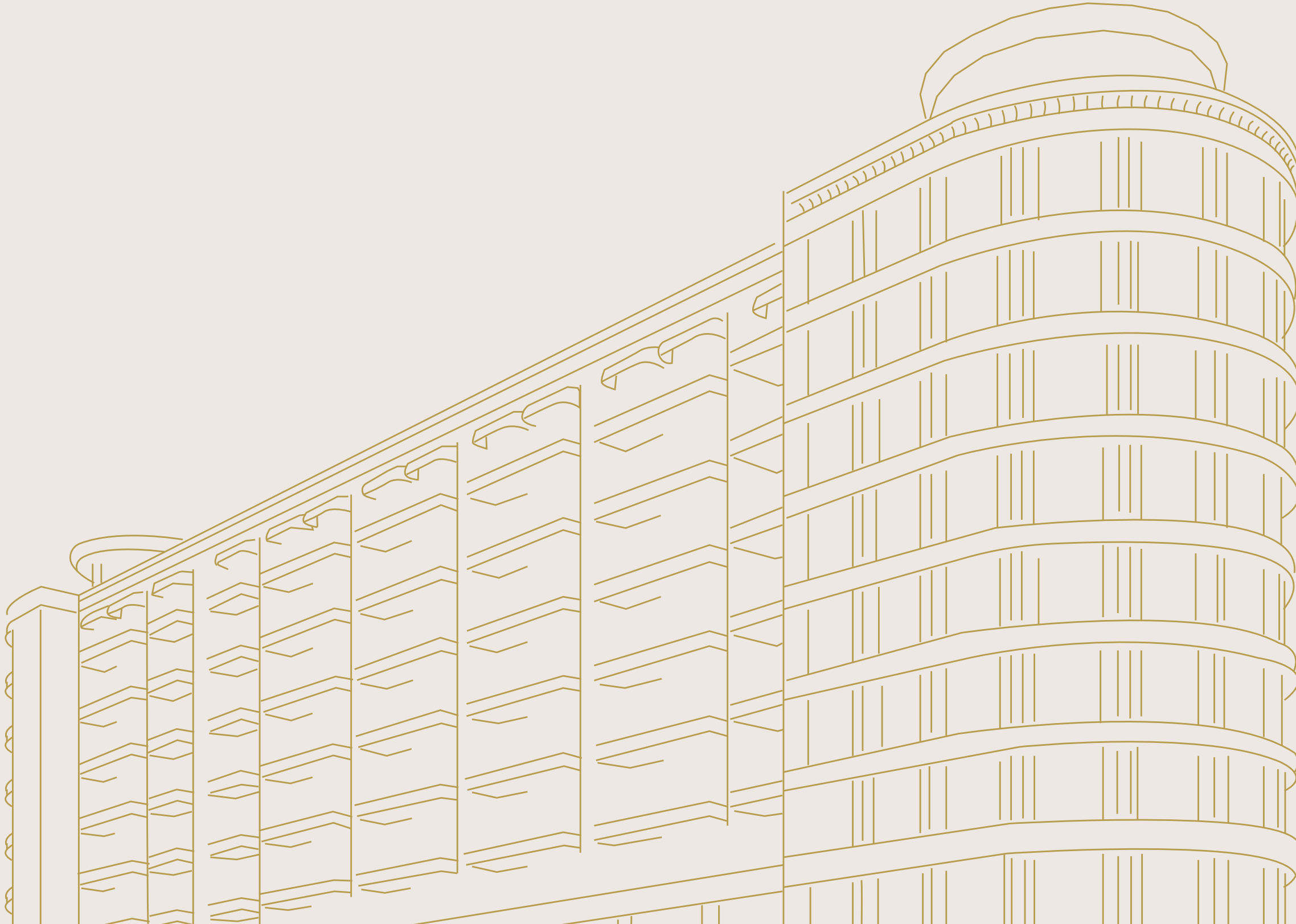


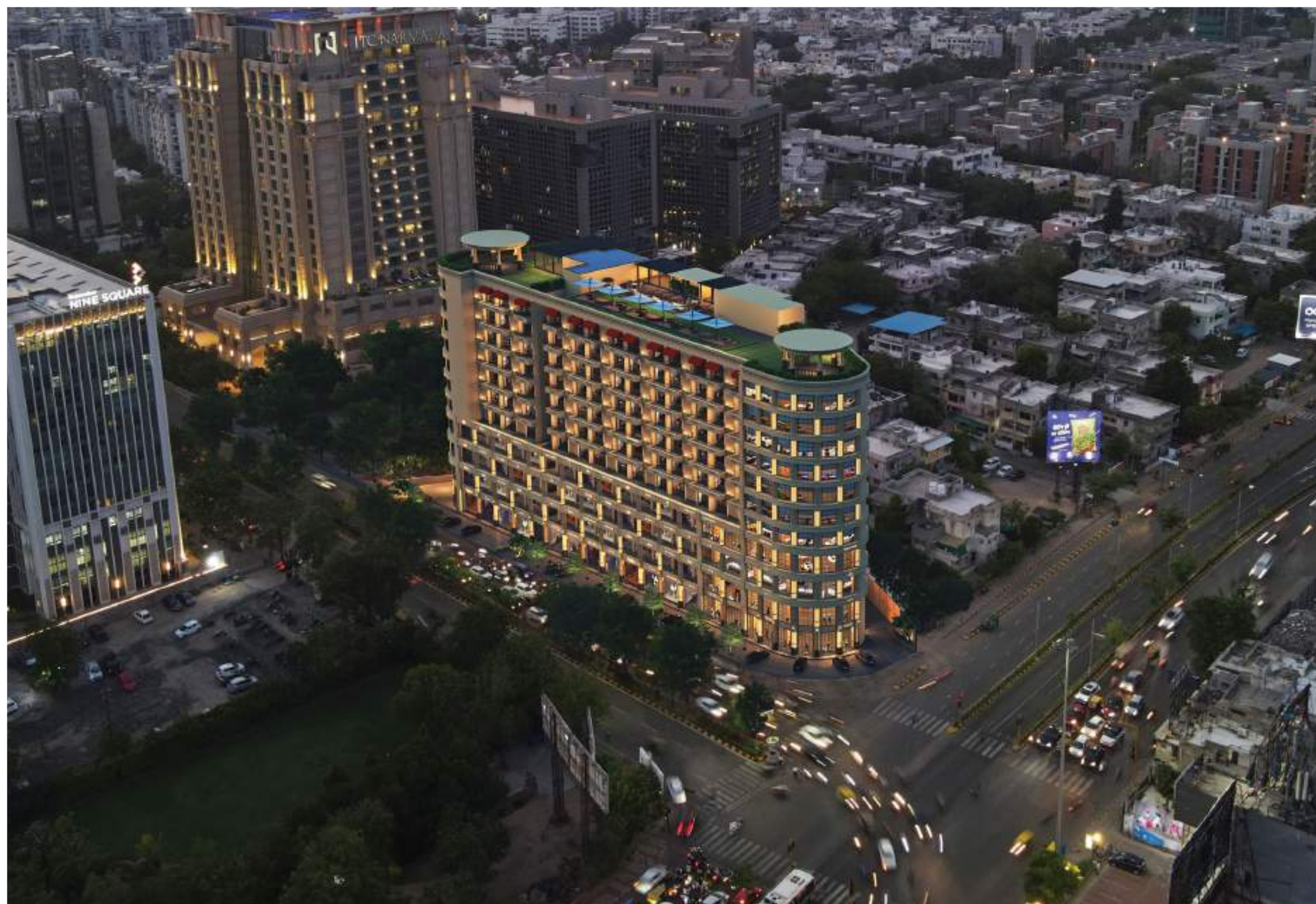
THE GOLDEN KEY TO UNLOCK SUCCESS AWAITS YOU...

LIFE GIVES YOU
MANY CHANCES,
BUT ONLY A FEW
ARE GOLDEN...

Presenting

A rare opportunity to be in the heart of the city,
to own an address that spells success, to carve
your identity for now & eternity...





BUSINESS FLOURISHES WHEN YOU ARE AT THE GOLDEN JUNCTION

IIM ROAD

ITC NARMADA

SHIVRANJANI

The Keshavbaug Capital, strategically located in one of the busiest and most thriving locations in Ahmedabad, stands as a rare gem.

In a bustling city where prime locations are hard to come by, Keshavbaug Capital stands as a testament to its uniqueness and desirability. It offers a rare opportunity for businesses to thrive in a truly remarkable setting.

ESTABLISHING A GOLD STANDARD FOR BUSINESS SPACES

WITNESS SHEER ARCHITECTURAL BRILLIANCE

With its distinctive charm and impeccable design, The Keshavbaug Capital is not only a coveted business space, but also a benchmark for all business spaces for now and future. Its exceptional design in colonial architecture adds to its allure and is slated to become a landmark of the future.



CORNER
BUILDING



AWE-INSPIRING
ARCHITECTURE



TWO-SIDE
ENTRY



IMPRESSIVE
CEILING HEIGHT

THE GOLDEN RULE OF SUCCESS

RISE ABOVE LIMITATIONS. GO BEYOND CONVENTIONS.

OFFICE HEIGHT

12.5 FEET

SHOWROOM HEIGHT

14.9 FEET



THE GOLDEN PROMENADE

WHERE EVERY GUEST DECIDES
TO BECOME A LOYAL PATRON...



STEP INTO SPLENDOUR IN YOUR BALCONY

WHERE EVERY DAY BRINGS
A NEW RAY OF POSSIBILITIES...





WHERE YOUR ASPIRATIONS CAN SOAR HIGH

The Keshavbaug Capital offers you
high ceilings so that your ambitions know no bounds.
With a never seen before

office height of **12.5 ft**
and showroom height of **14.9 ft,**

The Keshavbaug Capital redefines the meaning
of taking success to new heights.

WFH GETS A NEW DEFINITION :

WFH

WORK FLOURISHES HERE

THE SHEER GRANDNESS AT
THE KESHAVBAUG CAPITAL LENDS
A NEW MEANING TO THE ACRONYM
WFH.

STUDDED WITH ROOFTOP AMENITIES

Witness the golden glory of beautiful days



UNWIND ON THE TOP OF THE WORLD

The terrace at The Keshavbaug Capital offers breathtaking views of the surroundings to indulge in. With a meeting room, cafe, a gym and spacious sitting area, it creates a perfect work-life balance.



CONFERENCE ROOM ON TERRACE

A space to elevate your business

NOT JUST WORK, WORKOUT TOO

Find and maintain a mix of
work and life that works for you
and allows you to feel fit.





WHERE THE WORD “BIG” APPLIES TO EVERYTHING

Imagine the convenience of never having to drive around aimlessly searching for a parking spot. Our ample parking across three levels ensures that you and your guests will always find a convenient space to park.



ELEVATORS THAT ELEVATE THE VALUE OF TIME

No more standing in the queue to get into The Keshavbaug Capital. Enjoy a multitude of elevators because we know time is money.



WHERE PERFECTION IS NOT JUST A WORD,
BUT THE MOTTO WE LIVE BY

154

OFFICES

60

SHOWROOMS

120^{FT.}
& 132^{FT.}

ROAD SIZE

8

ELEVATORS

3

LEVELS
PARKING

800+

CAR PARKING
CAPACITY

24/7

SECURITY

FLOOR PLANS

GROUND FLOOR





1ST FLOOR PLAN



2ND FLOOR PLAN







10TH FLOOR PLAN



TERRACE FLOOR PLAN

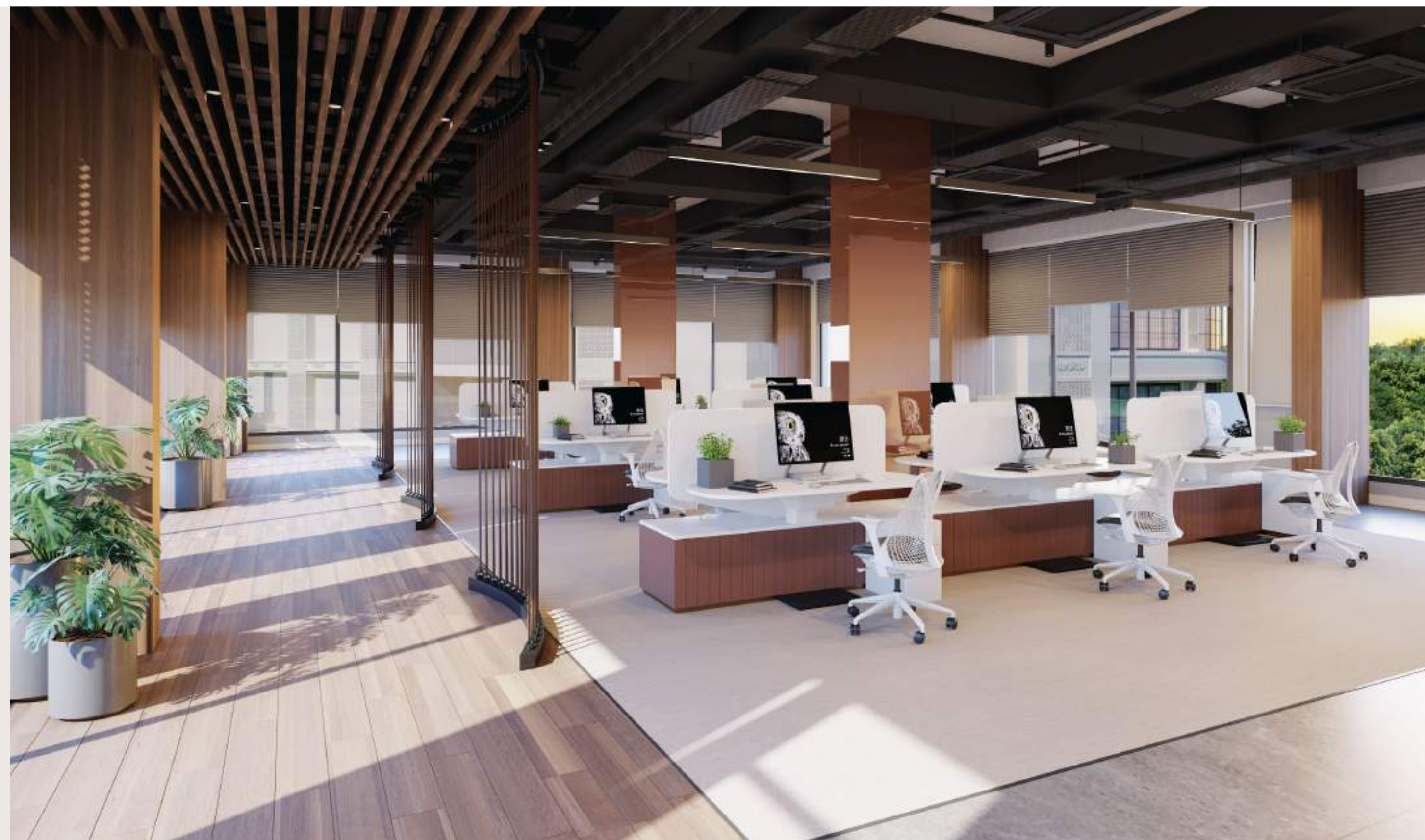
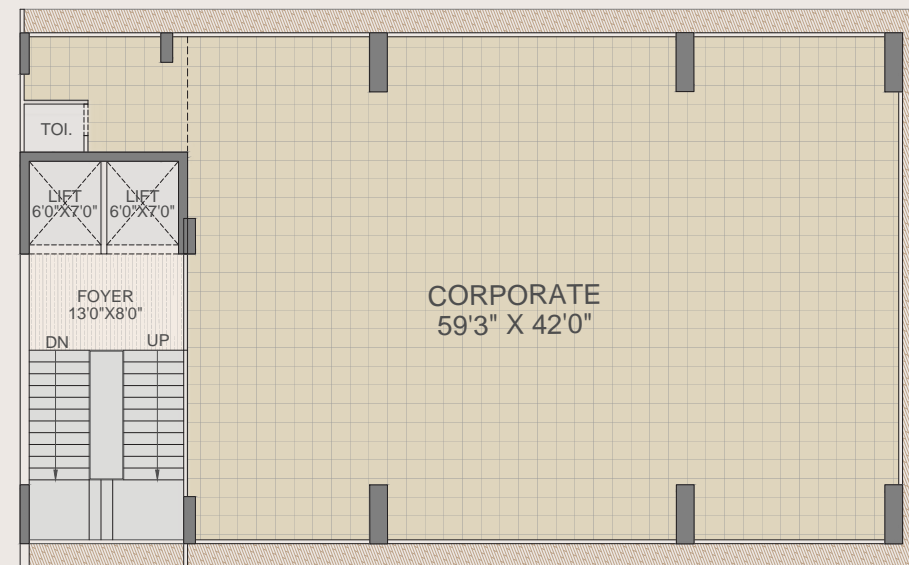
THE CAPITAL HOUSE

The Capital House, a magnificent 5-storeyed corporate marvel, is proudly rising at the prestigious Keshavbaug Capital. Boasting state-of-the-art infrastructure and modern design, this imposing structure is set to redefine the standards of corporate excellence. With every aspect carefully crafted to cater to the needs of distinguished IT and ITES businesses, The Capital House promises to be a hub of innovation, collaboration, and success.



DON'T CRAMP YOUR POSSIBILITIES

Imagine the possibilities of having a workspace where your team can come together effortlessly, sharing ideas and working towards a common goal. Our spacious floors are ideal for setting up large teams, providing ample room for easy collaboration and seamless workflow.





THE ADDRESS YOUR BUSINESS DESERVES

The prime location of The Capital House provides easy accessibility and an aura of sophistication, making it an ideal choice for leading IT companies.

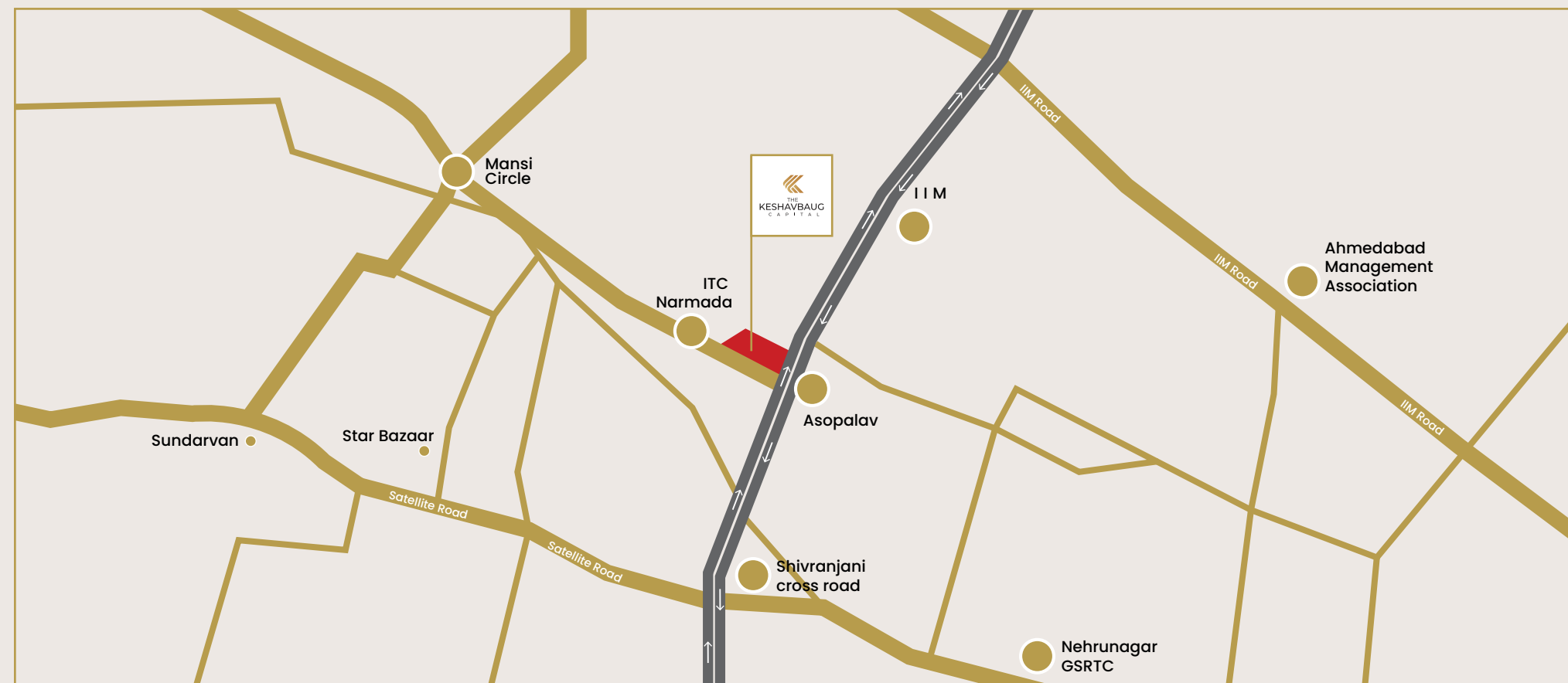


THE CONVENIENCE YOUR BUSINESS NEEDS

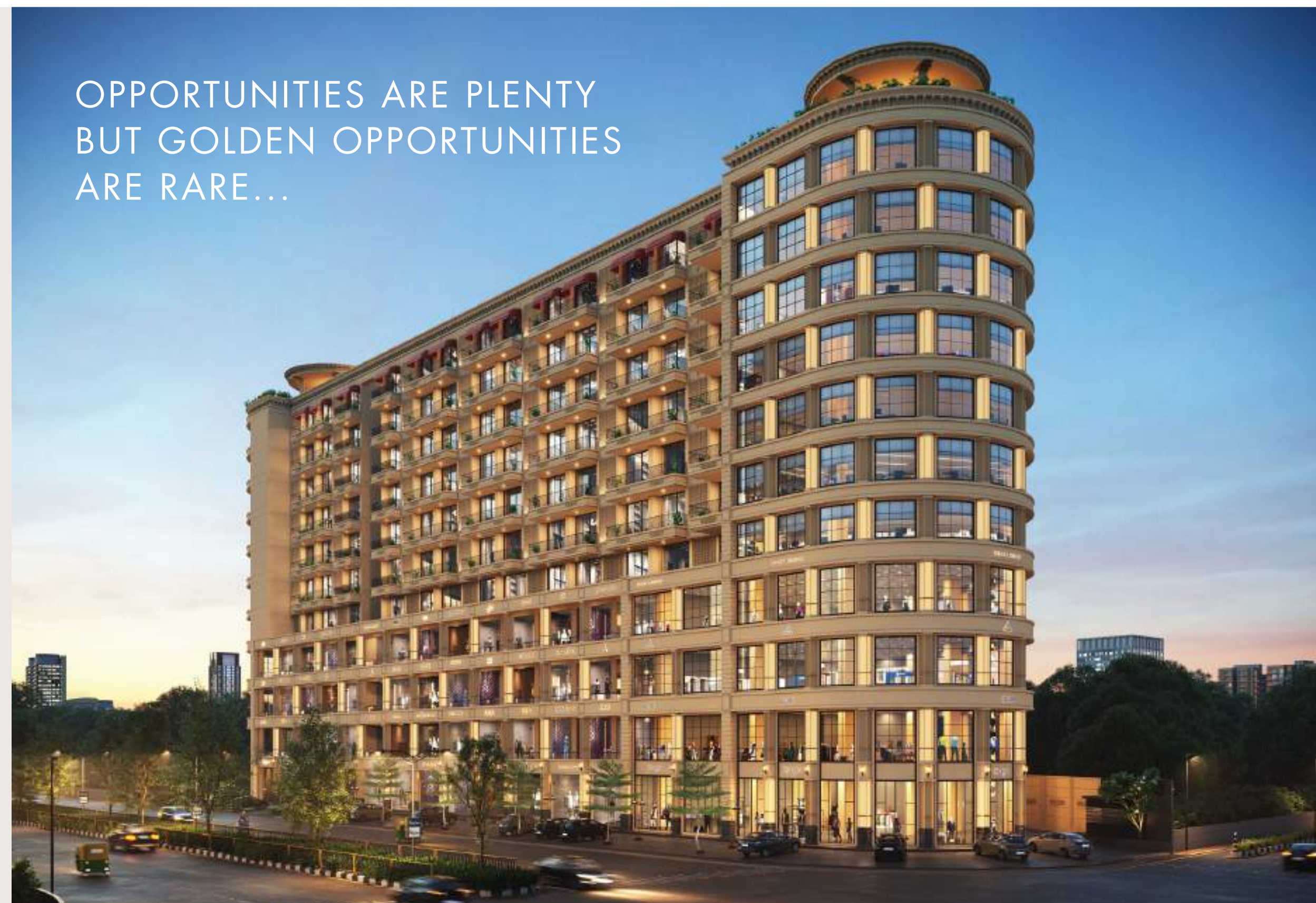
From its technologically advanced facilities to its state-of-the-art facilities, The Capital House stands as a beacon of progress and prosperity for modern businesses.

An opportunity for a select few to grow their business at

THE NEVER-BEFORE, NEVER-AGAIN LOCATION...



OPPORTUNITIES ARE PLENTY
BUT GOLDEN OPPORTUNITIES
ARE RARE...





CONSULTANTS

ARCHITECT - HM ARCHITECTS

STRUCTURE - SETU INFRASTRUCTURE

LEGAL - SBS LEGAL

MEP - AASHIR ENGINEERING & TRANSENERGY

COMMUNICATION & DESIGN - MAD PHOENIX MARCOM

AARYAN INFRA-BUILD PRIVATE LIMITED COMPANY

5000 BLISSFUL ABODES

25 YEARS OF LEGACY

LUXURY LIVING

Elevate your lifestyle to unprecedented heights with Aaryan Group, a distinguished construction powerhouse with a rich legacy of 25 years. With some of the most stellar projects that have become landmarks in Ahmedabad, Aaryan Group transcends conventional architecture to create an ambiance that redefines luxury. Every aspect of their projects is a testament to their thought-process, their attention to detail and unmatched refinement.

AARYAN LEGACY

